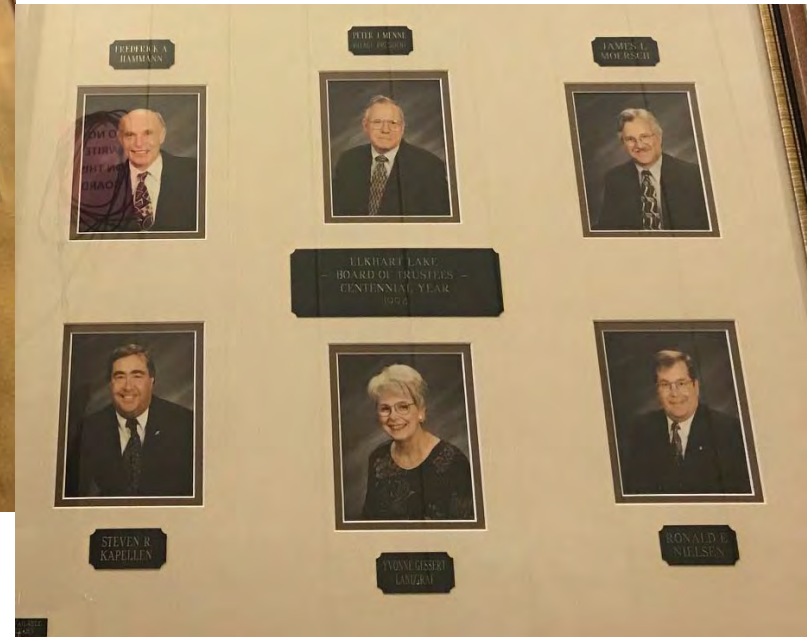




Welcome to  
the 125 Year  
Celebration



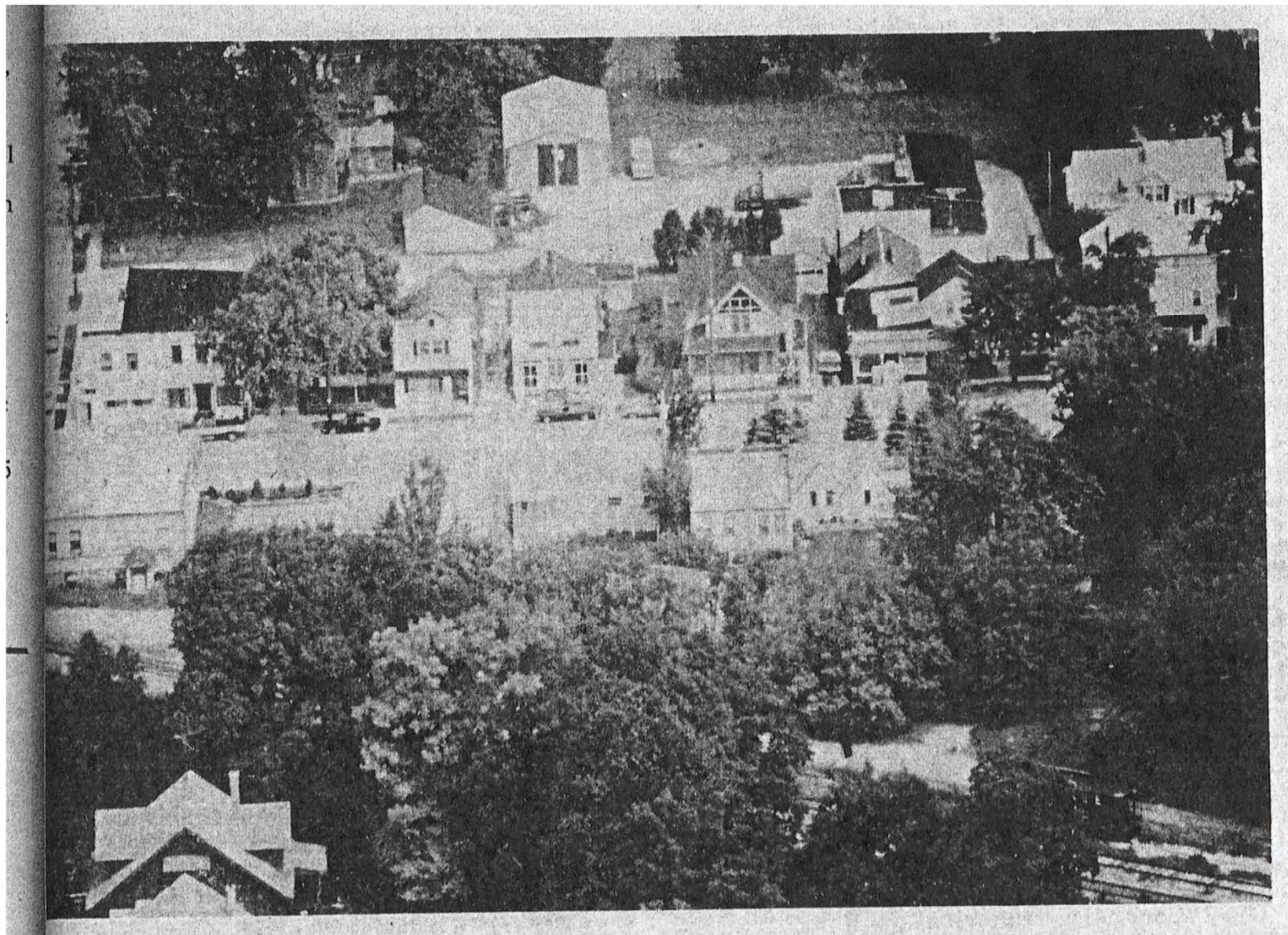
Village Board in 1984, 1994, & 2019



The Village, including the golf course from the Air







Rhine  
Street

**ELKHART**  
**LAKE**  
THE WATER THAT  
MADE ELKHART FAMOUS



atch

October 1982



"THE SQUARE"

Photo by Richard Schamberger





Aerial with S. Lake still a road  
and Camp Harand





## Aerials of the Village







The north side of Elkhart Lake

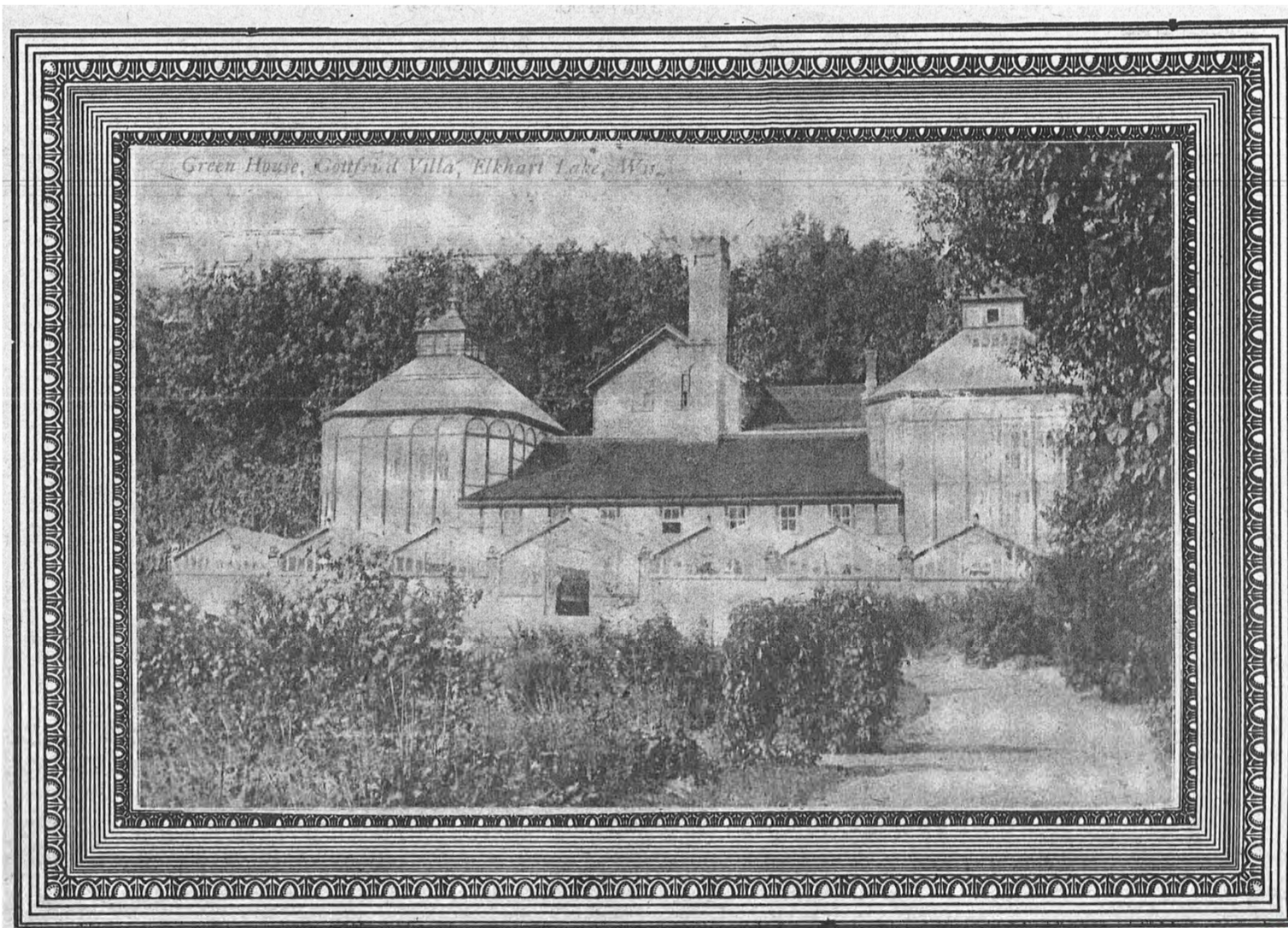


Looking towards the Village of Elkhart Lake.









Village  
Gottfried  
Green House







**Villa Gottfried**



**Looking towards outlet**



**Birchwood Conservatory**





Village Square  
Welcoming  
Committee



page 10

DEPOT DISPATCH JULY 1984

# The Haunts of the Very Young

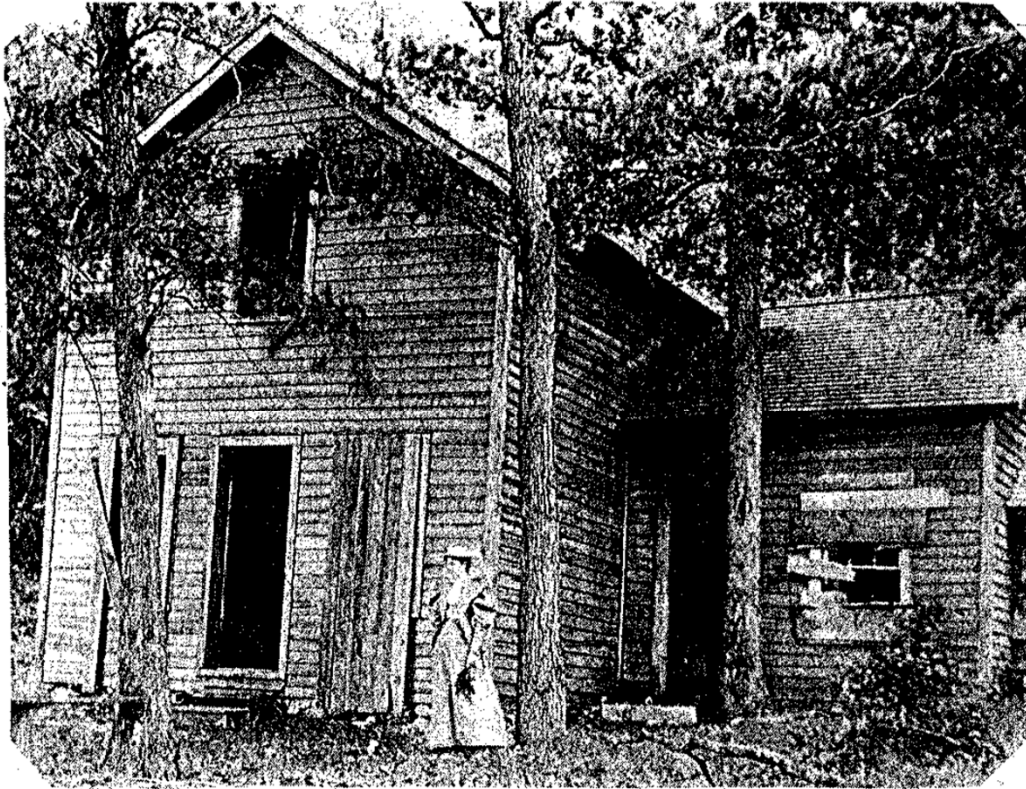


Photo courtesy of Bernice Clark.

Turtle Bay Haunted House





**The old water tower**



**Elkhart Lake lighting and power station**



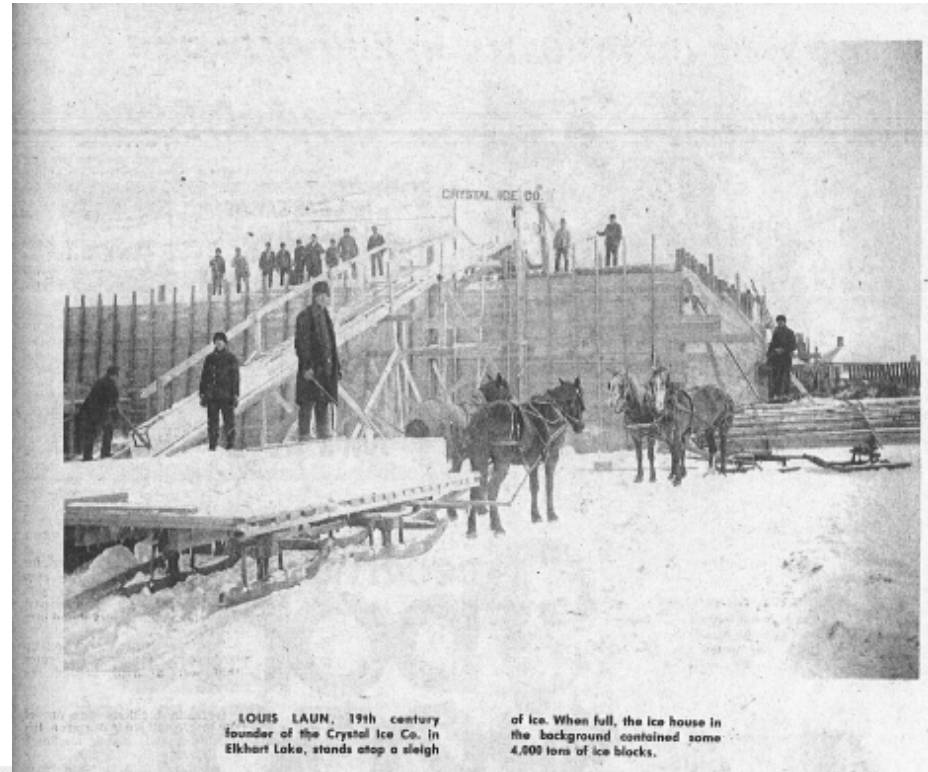


## Ice Was an Industry in Elkhart Lake



HARVESTING ICE on Elkhart Lake was a going business for Crystal Ice Co. at the turn of the century. Louis Laun headed the company

which employed some two dozen men using hand tools and horse-drawn sleds.



LOUIS LAUN, 19th century founder of the Crystal Ice Co. in Elkhart Lake, stands atop a sleigh

of ice. When full, the ice house in the background contained some 4,000 tons of ice blocks.



HERMAN SIEBKEN used a flat bed truck to haul blocks in his ice business. Years after, Louis Laun

used horse-drawn sleighs to supply the Crystal Ice Co.



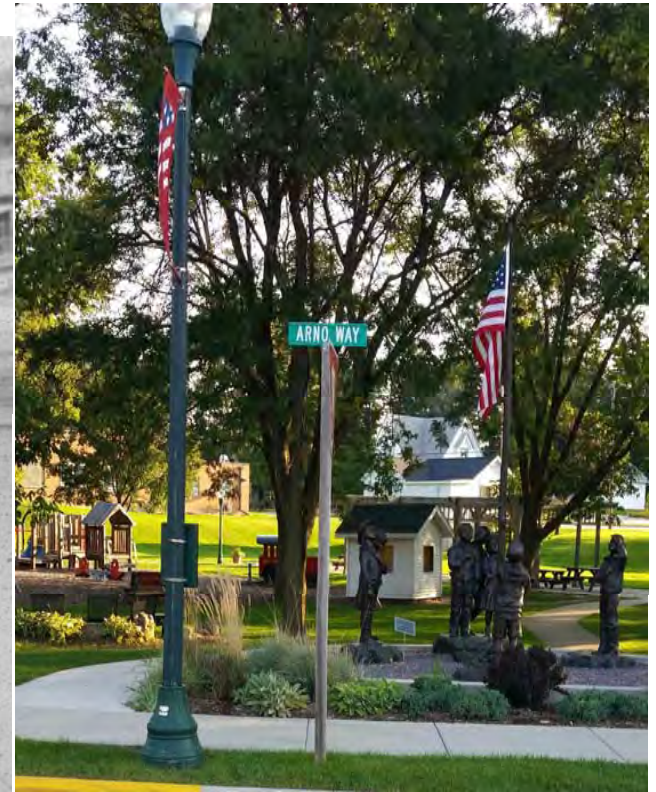
THIS GARAGE on Washington St. once served as an ice house for Herman Siebken, who ran an

Elkhart Lake ice business for a short period before modern refrigeration.



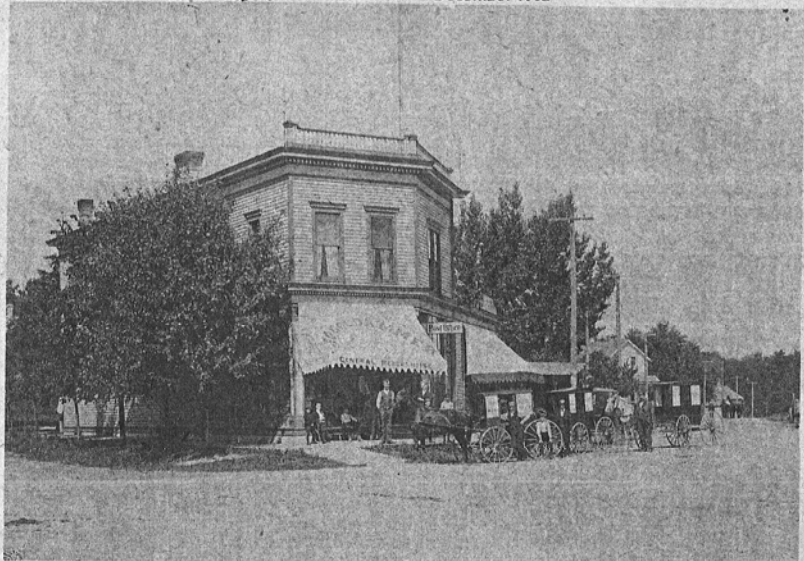


Arno Way Past & Present









*Goldammer's General Store*



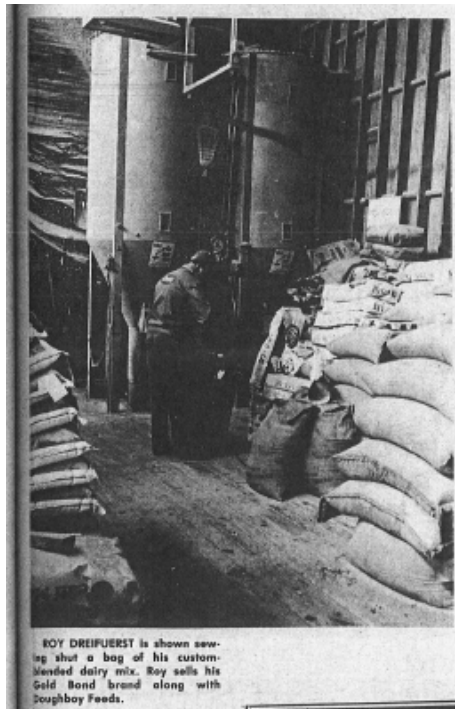




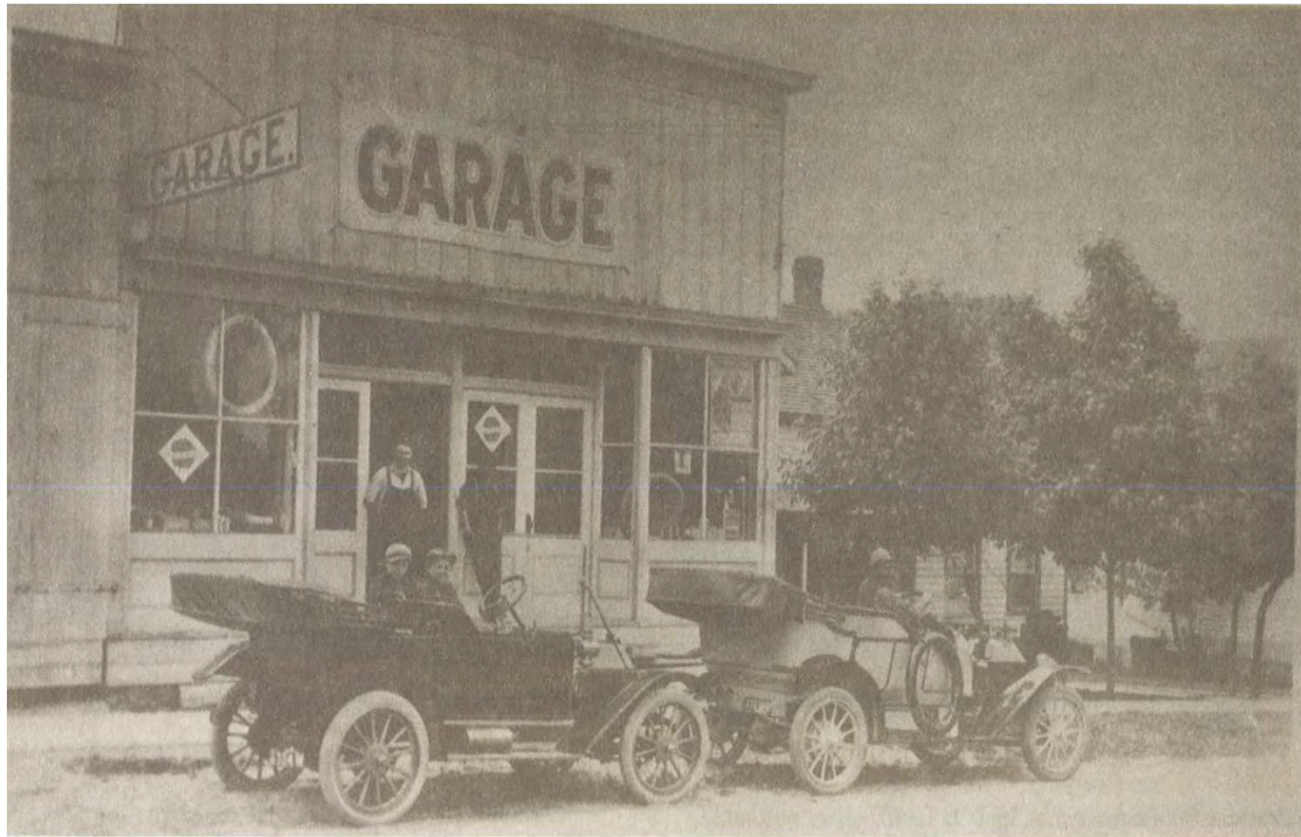
Laun Feed Mill Then &  
Feed Mill Shops now



## Feed Mill for sale







**HORNECK'S GARAGE** prior to being razed and replaced by the present stone block building. Just beyond the residence to the right would be the Keil Oil Co. operation.

— Photo courtesy of H. Gessert





*1951 Races Declared International*





## Racing in Elkhart Lake



1951 Start of the Novice Race





MG's in front of the Osthoff Hotel 1950



1948 Tucker Automobile on Display at the Races







*The 1952 Concours de Elegance*



## Vintage Car Parade through Elkhart Lake Village







Dave Felix in Hay Bales in 1951 Race





Central Hotel







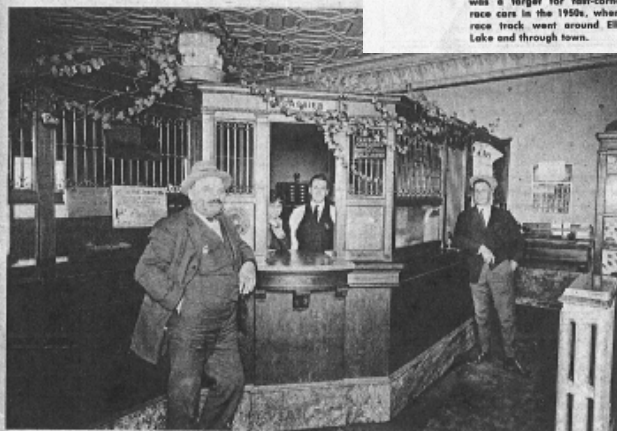
A PEAK at the top shows off the date of construction of the Bank of Elkhart Lake. The entrance to the bank was once at this corner, but was moved to an addition at the south end in 1961.

Many design details of the original building were carried through the newer section of the bank in a complete remodeling project undertaken this year.

Page 4



THE BANK OF ELKHART LAKE was a target for fast-cornering race cars in the 1950s, when the race track went around Elkhart Lake and through town.



IT WAS 1925 at the Bank of Elkhart Lake, where members of the staff posed for this picture in the original portion of the building.

From left they are: Robert Harbeck, director; Myldene Ellis, teller; Joe Wink, president, and Dr. Adam Loos, director.



The Bank donated the elk stained glass to the library



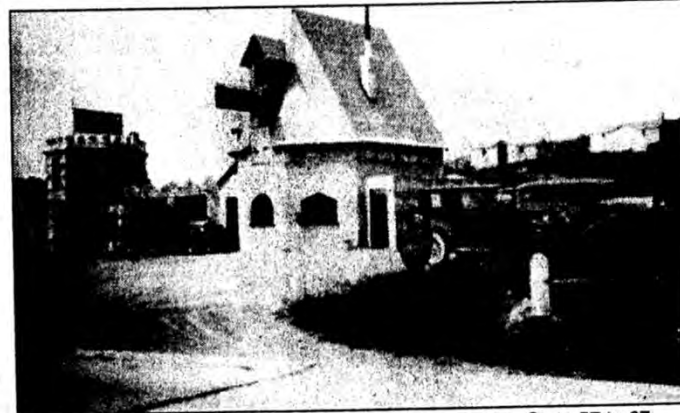
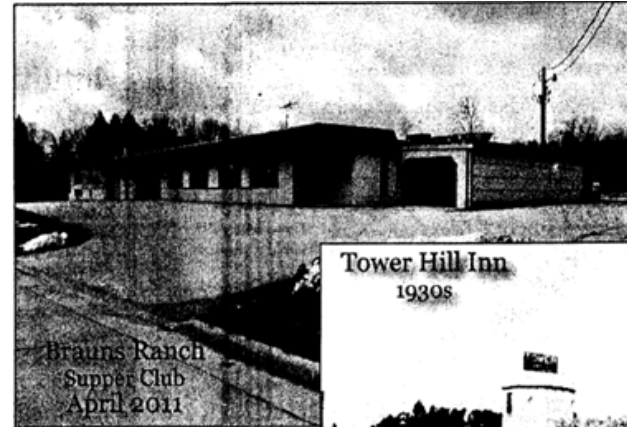








Tower Hill to Candy & Leroy's to Ward's To Izzy's to Braun's Ranch and Now Vacant







Currently, National Exchange Bank & Trust, formerly  
Weber's and Community Bank & Trust



## Chamber Building Over Time







Laun Furniture to Offices, Marsho Medical, to Gina's, to Vintage Wine





## Moioffer's Bar, Subway, Shops: Then & Now



## Thielmann's Meat Market to Aston Flats





## Cal & Gus: Then & Now





Page 3 - DEPOT DISPATCH - July 2009



In 1886 widow Mrs. Tillman purchased a lot from Otto Oelhoff and built a stone mansion. In 1905 Carl Schwarz transformed the residence to a European style restaurant, Club Elkhart. Now owned by Elkhart Lake native Jesse Reithmeyer, the restaurant continues as the Elkhart Inn.





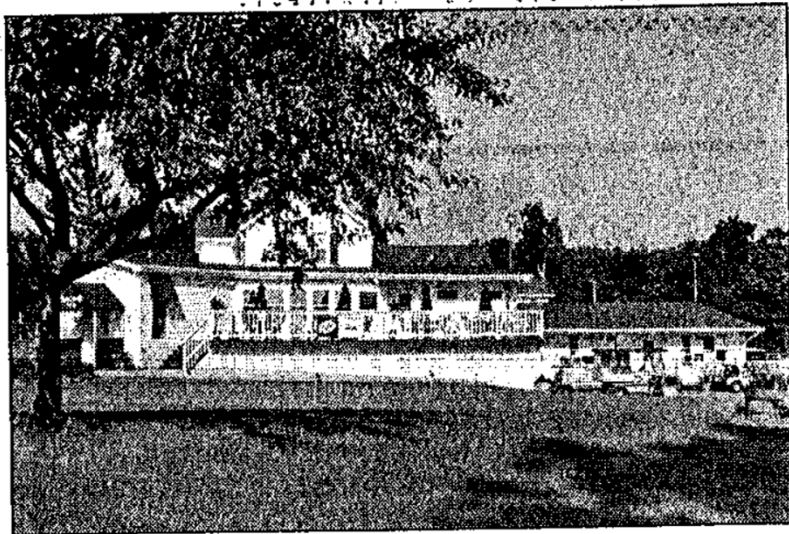
## Sargento: Then & Now



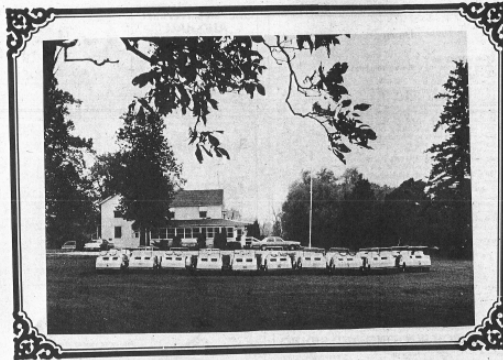








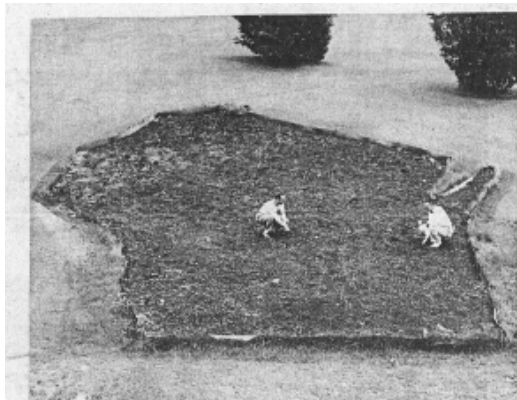




THE QUIK QUI OC clubhouse has been remodeled since the Wiesse bought it in 1955. Additions included a pro shop and dining facilities.

Electric golf carts replaced the regular use of caddies, when youngsters were employed to carry golfing equipment.

Two golf courses are within the Elkhart Lake area. The other is Crystal Lake golf course.



IN 1955, QUIK QUI OC had a putting green in the shape of our state with a star marking Elkhart Lake. Carl Wiesse, at right, designed the

green and wanted to use its shape as a logo for the golf course. Dr. John Martineau is at his left.

