



THE DEPOT looking northbound with Laun Feed Mill to the left of the track.

— Photo courtesy of H. Gessert







For the first time in over 50 years, a steam locomotive engine passed along the tracks through downtown Elkhart Lake. Hundreds of people gather to see this historic event and take photographs.

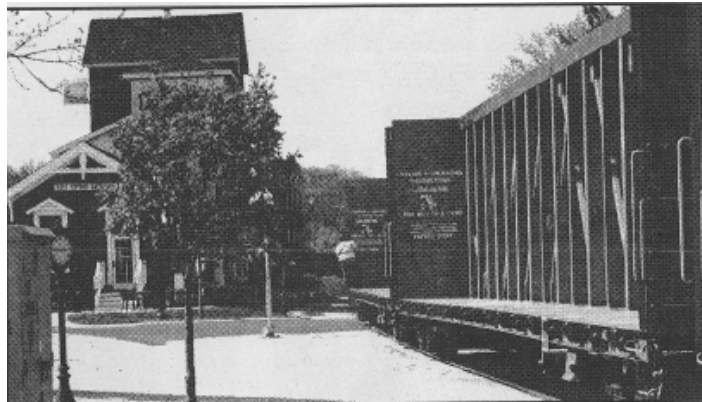
Photo by Mark Ignatowski



Train cars back on EL track



A locomotive ran 58 rail cars over Elkhart Lake's Rhine St. crossing.



The rolling stock involved in the move is a specialized type of rail vehicle called a center-beam bulkhead flat car.



Each of the cars is 75 feet long. The cars are designed to haul lumber, much of it destined for housing construction.





Caboose over the time, from its arrival to the refurbishment that was completed in 2017.



Boy Scout Cabin



THE SCOUT cabin at Camp LaBudde.
— *Photo courtesy of E. Landgraf*





The Sheboygan Press Thurs May 11, 1950



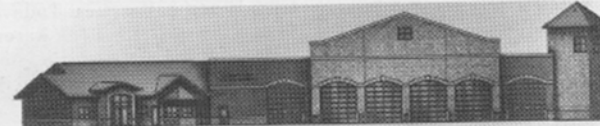
ELKHART LAKE Firehouse, early spring, 1994. Trucks are out to allow interior cleaning of facility.

— Photo courtesy of E. Landgraf



Elkhart Lake will soon have its new fire station

Representatives from the Village of Elkhart Lake, Elkhart Lake Area Chamber of Commerce, Short Elliott Hendrickson, Inc. (Engineering), and The Selmer Company (Construction Services) are excited to have this important project underway. Pictured from left to right are: Darren Lindstrom (E.L. Fire Dept.), Mary Johnston & Lola Roeh (Chamber), Rola Klahn, Yvonne Landgraf, Steve Kapellen, and Tom Nelson (Village Board), Jeanette Moioffer (Village Clerk), John Reiss (E.L. Fire Chief), and Chuck Thiel (Community Bank & Trust). Photo by Bill Johnston



SOUTH ELEVATION



New Elkhart Lake Fire Station nearing completion



The new Elkhart Lake/Town of Rhine Fire Station is nearing completion. By the time the grand opening occurs and our local firefighters can spread out and enjoy the new facility next month that snow pile in this photo should have disappeared. Stay tuned for the May grand opening and the chance for all of us to view the exciting new facility!

The New Fire
Station
Opened in
Spring of 2009.





Ready to grow

Ground-breaking ceremonies were held this week for the expanding Elkhart Lake Library and municipal offices. Pictured are (left to

President, Roger C. Spindler; Jim Pankow Inc. representative, Jim Price; Library Board President, Karen Helmle; Fundraiser, Lee W.





Committed to a goal of raising \$100,000, members of the Elkhart Lake Public Library Fund-Raising Committee are—Front row, left to right: Rosemarie Lauer, grant applications captain; Abbie Willis, public relations and advertising; Diane Hamelster, public relations and advertising captain; Marlene Mohr, treasurer. Back row, left to right: Captain Tom Wiese, fund-raising captain; Lee Verhulst, fund-raising committee; and Ed Landgraf, group coordinator and liaison with the Library Board. —Sara Arendt photo



Proposed addition to the Elkhart Lake Public Library and Civic Center. An artist's rendering of the new addition is on display at the library.



THE ELKHART LAKE LIBRARY, tucked into this cozy interior, will be moved to the lower

portion of the new civic center only footsteps away. The village is studying the

possibility of using this soon-to-be vacated cottage as a new home for the police department.

Photo by Richard Schamberger





Little house has long past, new future

ge 14 Depot Dispatch December 1981

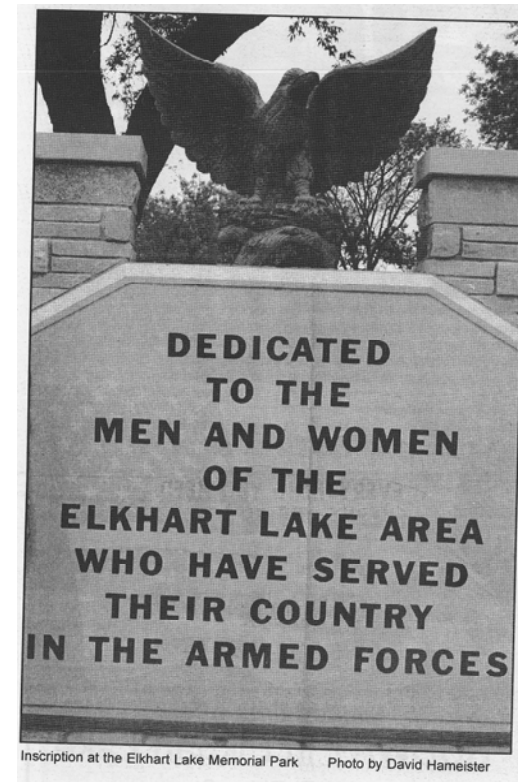
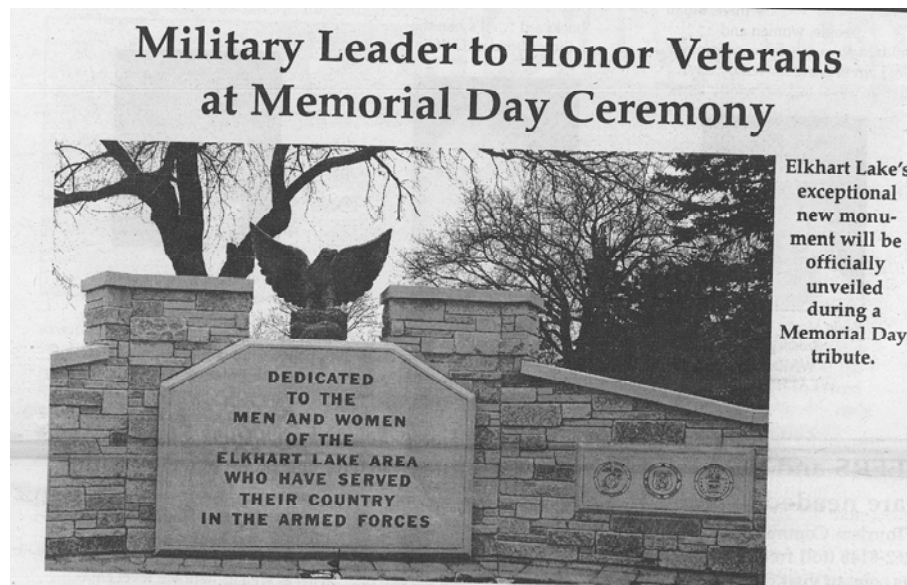


THIS LITTLE building on N. East St., has had several locations and many owners in its 106 years of existence. With the help of donations it has been remodeled and will soon become the new Elkhart Lake Police station. Chief Thomas Winscher and his police car will be a part of the new setting.

Ask



Veteran's Memorial Dedicated in May 2007 at Memorial Park





Private Resident's Beach Before & After



8770

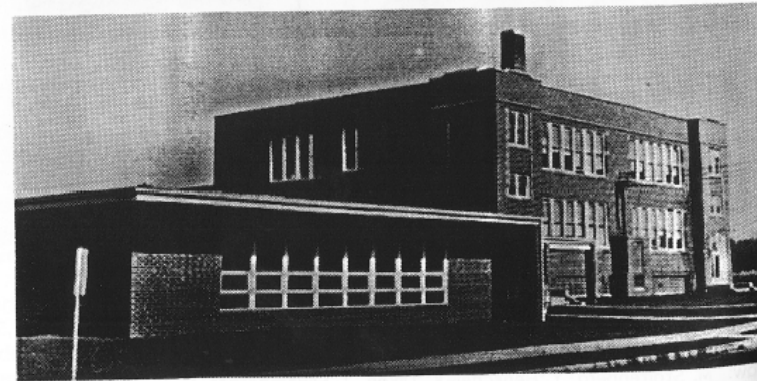
SCHOOL HOUSE, ELKHART LAKE, WIS.



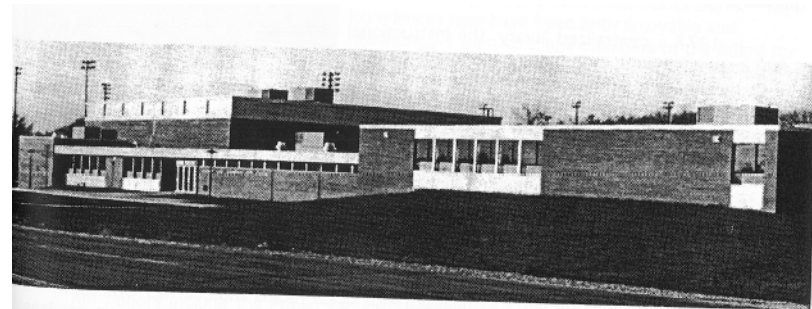
THIS POSTCARD from 1912 shows the Elkhart Lake grade and high schools that once stood on the corner of Lake and Pine Streets, now a parking lot for Sargento Cheese Co.



THE FACES could be the same, but the jerseys, shoes and mid-parted hairstyles of these Elkhart Lake school basketball players speak of the year 1926.



#610-846-4
Elkhart Lake Elementary and High School
1957



The Elkhart Lake-Glenbeulah High School constructed in 1967 - 68









Centennial Celebration & Gift of the Gazebo

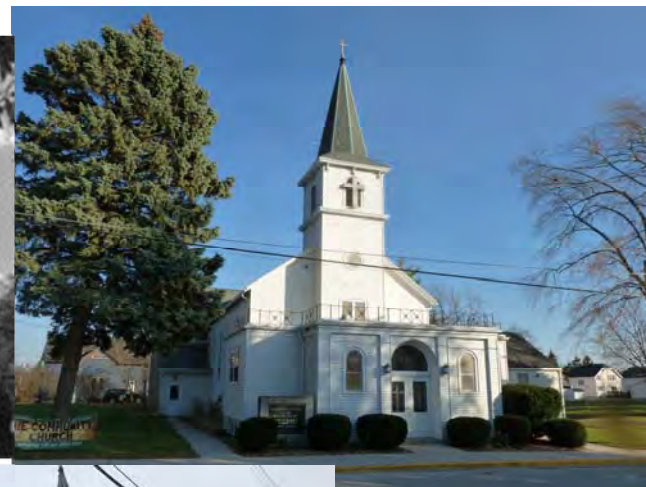






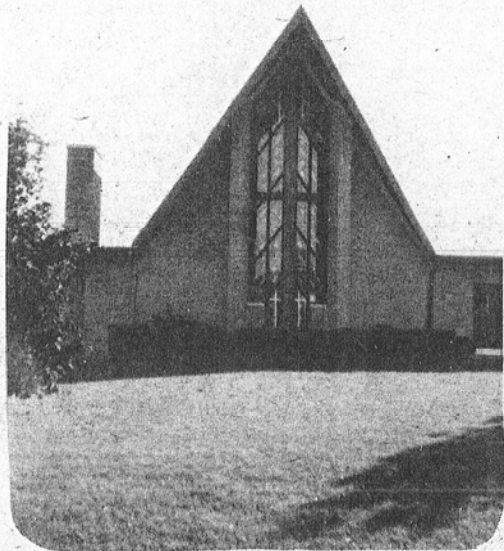
**THE COMMUNITY U.C.C. Church and Fellowship Hall,
spring, 1994.**

— Photo courtesy of E. Landgraf



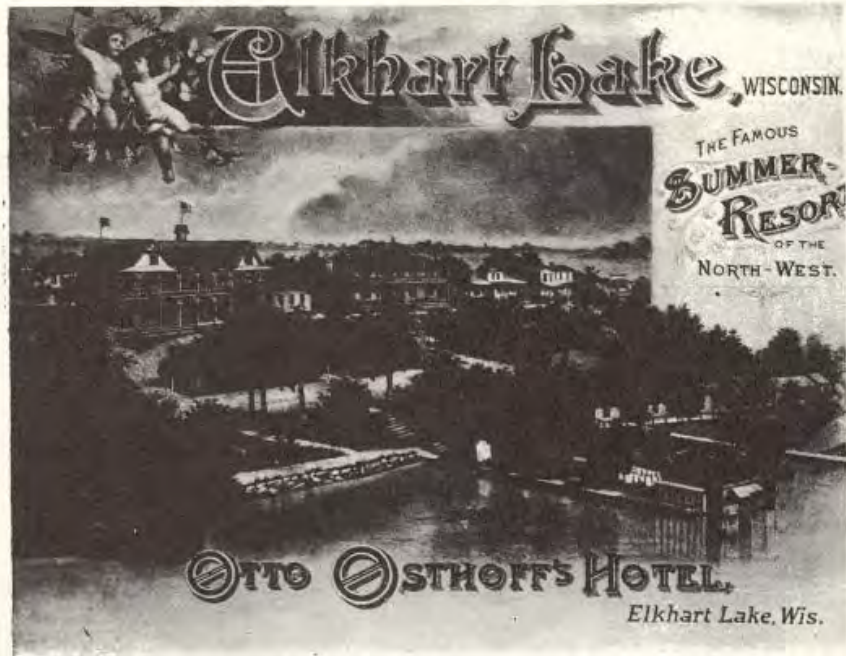
continued from page 17

page 18



Grace Lutheran Church was dedicated in December 4, 1966 and is a mission church of Zion Lutheran of Glenbeulah.







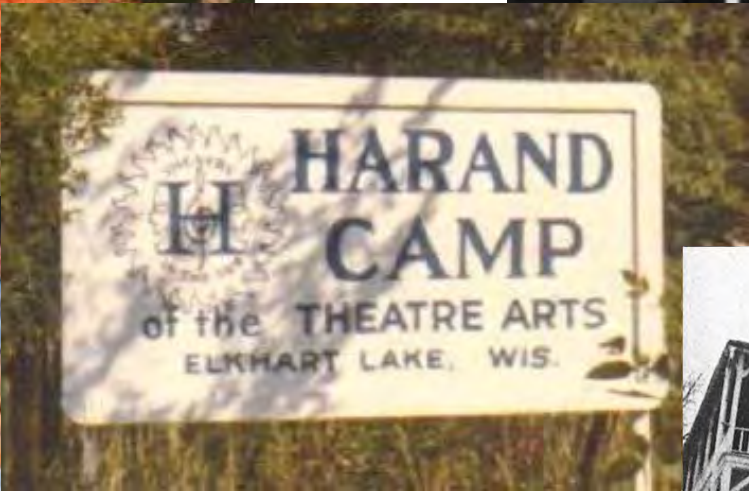
Old S. Lake
Street w/ old
Osthoff
Resort





Lake Street looking
north towards Siebkens





WONDERFUL TOWN, the main building at Harand Camp

CELEBRATING 125 YEARS

MADE ELKHART FAMOUS

PT
KE



Camp Harand and S. Lake Street





The Osthoff

by Ann Pirrung

A Special to the Depot Dispatch

The First 100 Years



The Next 100 Years



THE OSTHOFF BUILDING — View from lakeside walk shows how both ends of the building have been enclosed, while construction continues on the center section.

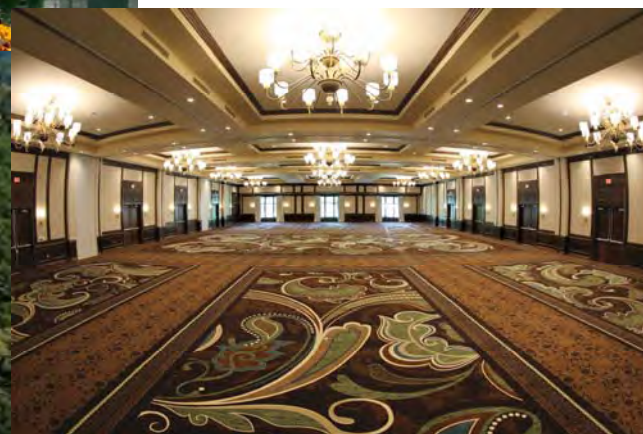


Village Beach & South Lake Street Under Construction in the early 1990's.













Page 6 - DEPOT DISPATCH - September



Above: One scoop or two?
Construction knocking on the
Chamber's door.
Below: Construction on the
corner of Rhine and Lake
Streets.

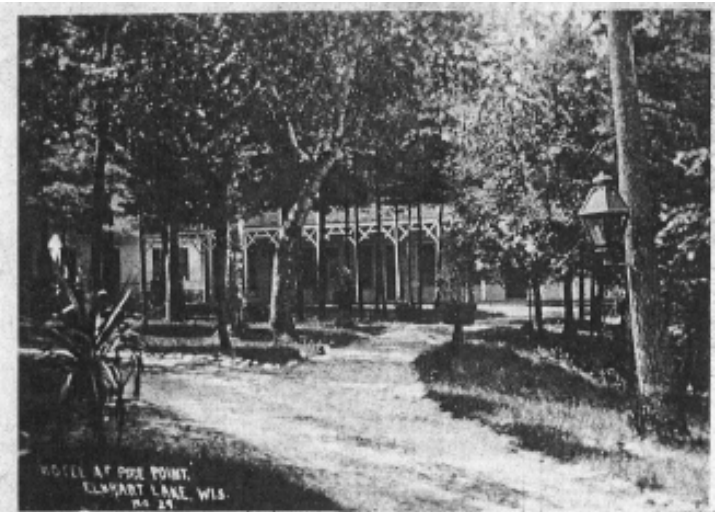


June 1982

Depot Dispatch



ENTERTAINMENT in Elkhart Lake was delightful at the Pine Point Resort. A small orchestra played for the dances held there. Masquerades or as they called them, "Special-Dress Parties" were held with popular regularity. Center photos show children in costume for a Pine Point party. At right, are Minnie Diefenthaler La Budde (top) with Harry W. Miller and friends. Miller directed many entertainment events including dance lessons for children, musicals, card parties and masquerades.



The Siebken Tradition Goes On



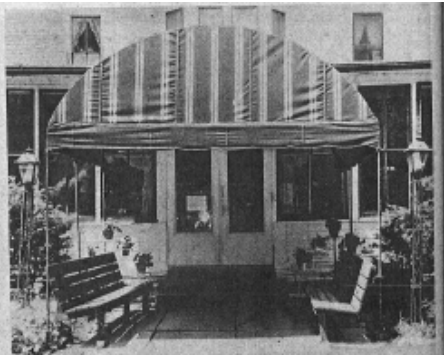
THE ROOMS of the tavern have recently been redecorated and furnished with antiques. Photo by Richard Schenberger



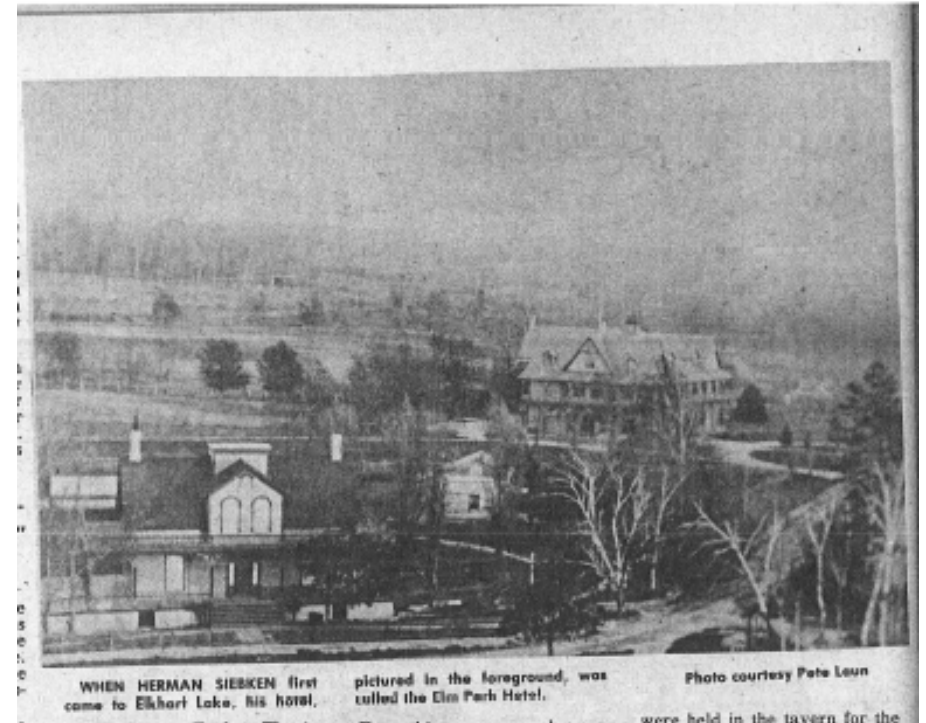
THE FAR CORNER of the summer dining room shows off the charm of wainscoting and antique furnishings.



THE ENTRANCE to Siebken's tavern is as cozy as an old-fashioned porch. Inside are spacious rooms with a colorful decor.



THE ENTRY TO Siebken's dining room invites a meditative rest.



WHEN HERMAN SIEBKEN first came to Elkhart Lake, his hotel, pictured in the foreground, was called the Elm Park Hotel.

Photo courtesy Pete Leon

were held in the tavern for the





Siebken's Elm park hotel



New cottage at Elm park hotel



North end, Elkhart Lake



August 1900



Good Food Is Not The Only Heritage

By Ruth Schmitt

"Good Food is our Heritage." This sign stands by the entrance of Siebken's Resort today, but that motto has been true since 1917 when the Herman Siebken family took over the resort.

Siebken's still make their own rye bread — the recipe was brought from Europe. "Of course, I changed it a little," began Ollie Siebken Mueller, daughter of Herman and once owner of the resort, "because the flour is no longer as good."

"We also make all of our own desserts," Ollie began. "We used to have pineapple pie and it over sold. We changed the name to Siebken's Delight and now it is one of the favorites," Ollie added, chuckling.

Siebken's is also famous for its original, spicy dressing. Although Ollie had been accustomed to preparing it commercially, she never did because "it just wouldn't ever be the same."

"Buying quality stuff makes it so much easier to get quality food," remarked Ollie. "I did business with the same people over and over again and they knew what I wanted and I always got it," she added proudly.

The curly, gray-haired, enthusiastic woman smiled as she recalled her childhood days. Her father was a European hotelman, so she learned the hotel business early. After her father lost all of his money, her family left Germany to come to America in 1914 for a fresh start, and settled in Elkhart Lake in 1916.

In 1917, the hotel could accommodate 75 people and had rates of \$2.25 per day and \$20 per week.

Herman Siebken then purchased the Elm Park Hotel, thinking he also owned a large section of the lakefront. However, the Bloomfields, who owned Schwartz Hotel, claimed Spaulter's rights and were declared owners of the land.

After this, Mr. Siebken the Lake Cottage from Bloomfield. "My brother always called it the Chamber," chuckled Ollie. The Lake Cottage was a gambling house when it was a popular activity area.

In 1917, the hotel could accommodate 75 people and had rates of \$2.25 per day and \$20 per week.

The original hotel was a house. "When we ran Elkhart Lake, there were wooden sidewalks," remarked Ollie.

Please turn to page 10





SHARPE'S HOTEL, ELKHART LAKE, WIS.





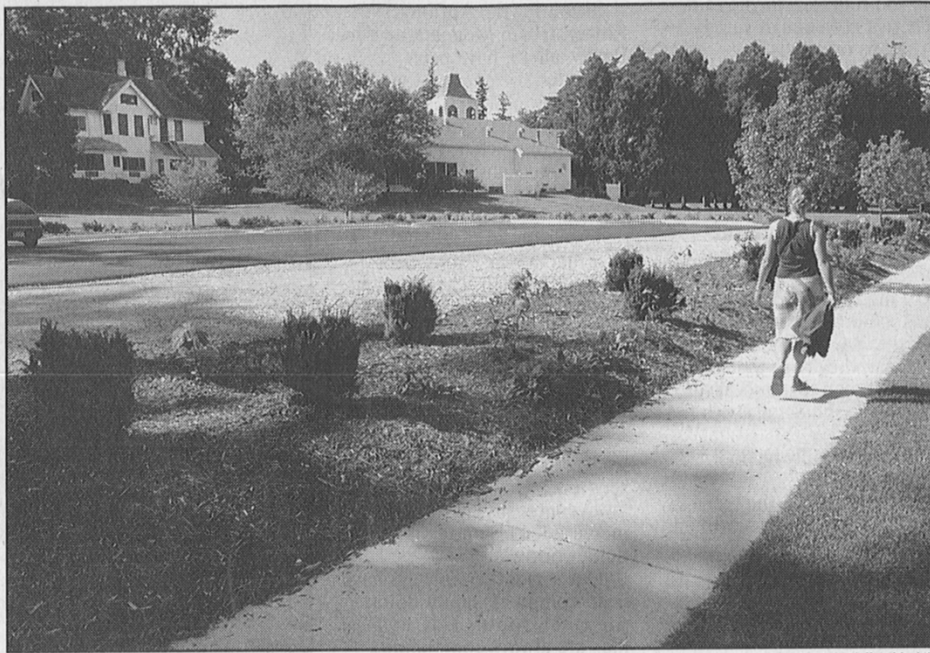
BATH HOUSES, HOTEL SCHWARTZ, ELKHART LAKE, WIS.





Music, games, meals make Schwartz Resort





Press photo by Jeffrey Machtig

A pedestrian walks past the parking lot at Victorian Village in Elkhart Lake Thursday. The plantings between the sidewalk and the parking lot have been questioned by some residents, who say they do not adequately screen the lot from view.





Water Sports Center Group Brown is asking the village of Elkhart Lake for a permit to let him place the two modified watercraft allowed by a developer's agreement.



Sail boat races are held on Elkhart Lake at noon on Sundays throughout the summer months. Elkhart Lake's no-wake Sundays provide a perfect lake setting for sailors and paddlers. Photo by Les Tension.





Looking Forward to the Next 125 Years!!!

Thank you to all who helped put this together, and special thanks to Yvonne Landgraf, Marcia Schamberger, Mike McGill, and Pam Garton whose photos were used in this slideshow.

